



Snow Plan for 2009/2010

This document will serve as the Snow Removal Plan for the 2009/2010 Winter Season. The design of this Snow Plan is to inform our residents and staff of how we intend to clear the streets, sidewalks, and walkways during the winter months.

AFC Objective is to continue providing the best service possible in a timely manner.

America First Communities in partnership with US Grounds in the past has categorized the snow removal into three priority areas.

“Priority 1”

Once 2 inches of accumulation is on the ground; our snow removal crews will begin to keep the main roads or “Priority 1” streets clear until the snow fall has ended. These streets include Generals and Chiefs Rows, Coffman Heights, 23rd St, Forbes, Turner, from Dow west on Vandenberg up to the intersection of Vandenberg and 34th St. 30th St, Schilling, 33rd St, 35th St, Albert Rains, 34th St (Barksdale to Vandenberg), Barksdale to Lockbourne, Lockbourne/Kennedy, Pease, 32nd St (Pease to Lockbourne), 29th St. from Vandenberg to Lockbourne then 29th Ave from Lockbourne to Holloway. 33rd St from Vandenberg to Whiteman and Whiteman through March Circ. Forbes from 25th St up to Vandenberg, Dow to Capehart road and Hruska from 25th St. to Kennedy.

In conjunction with Priority 1, Generals and Chiefs Row will have a “dedicated” crew until the alleys, walks, parking in front of the garages, at the side door of the garage, and at some of the homes, steps up to the side door to the garage. Then the crew will clear the two steps up from the street to the walks, the sidewalks parallel to the street and the walkway leading up to the steps of the home. The resident is responsible for clearing the steps leading to the porches.



There will be no use of chemicals on the sidewalks parallel to the street and on the Flag stone leading up to the homes but salt will be put down at the bottom of the downspout next to and in front of the trash enclosure. The snow crew will clear the front sidewalk to the home only, rear entrance doorway, at the side door of the garage and around the base of the downspout at the back porch. Salt will be added at both the rear door way and side door of the garage.

“Priority 2”

After the snow fall has ended, the crews will begin to clear the “Priority 2” streets. These streets are Walker, 24th St, 29th Ave(North of Pease) 30th Ave, 31st St, 32nd St, 35th St, Biggs, McConnell, Altus, Tinker Dyess, Griffis, Carswell, Dow, 32nd St (North of Pease), Holloway, Ryan, Power, Dacy. Harmon Ct, 30th Ave (Cull de Sac), Barksdale Ct, Chennault Street, Court, Circle, 28th St., 28th Ave, Rising View Blvd, 26th St., 25th Ave from Dow to Whiteman, Whiteman from 25th Ave to Rising View Blvd, 26th Ave, Castle off Rising View Blvd, Minot, 27th St., Beale Circ. McCoy Dr. and Lower Pease Also included are Larson Circle and Ramey Ave. Included in the snow removal for “Priority 2” are all common sidewalks. (These are the sidewalks that are not assigned to a specific address or school crossings.) In the event of school cancellations or the snow fall occurring on a weekend, the crews will stay focused on the streets to keep them clear. Once it is determined that school will resume its sessions or it is a Sunday, the crews will have the common sidewalks and school crossings clear prior to the students arriving for school.

****Note* In the event we receive more than 10 inches of snow, we will make a single pass until the snowfall ends.***

“Priority 3”

Our last group is “Priority 3” streets and areas. These include all streets inside of demolition or construction areas and vacant home sidewalks. The crews will make one pass only on the demolition and construction streets in order to facilitate emergency response vehicles. In the renovation areas, the construction contractor is responsible for clearing the driveway and the snow removal crew will get the sidewalk. In all other vacant sidewalks the snow crews will clear them.

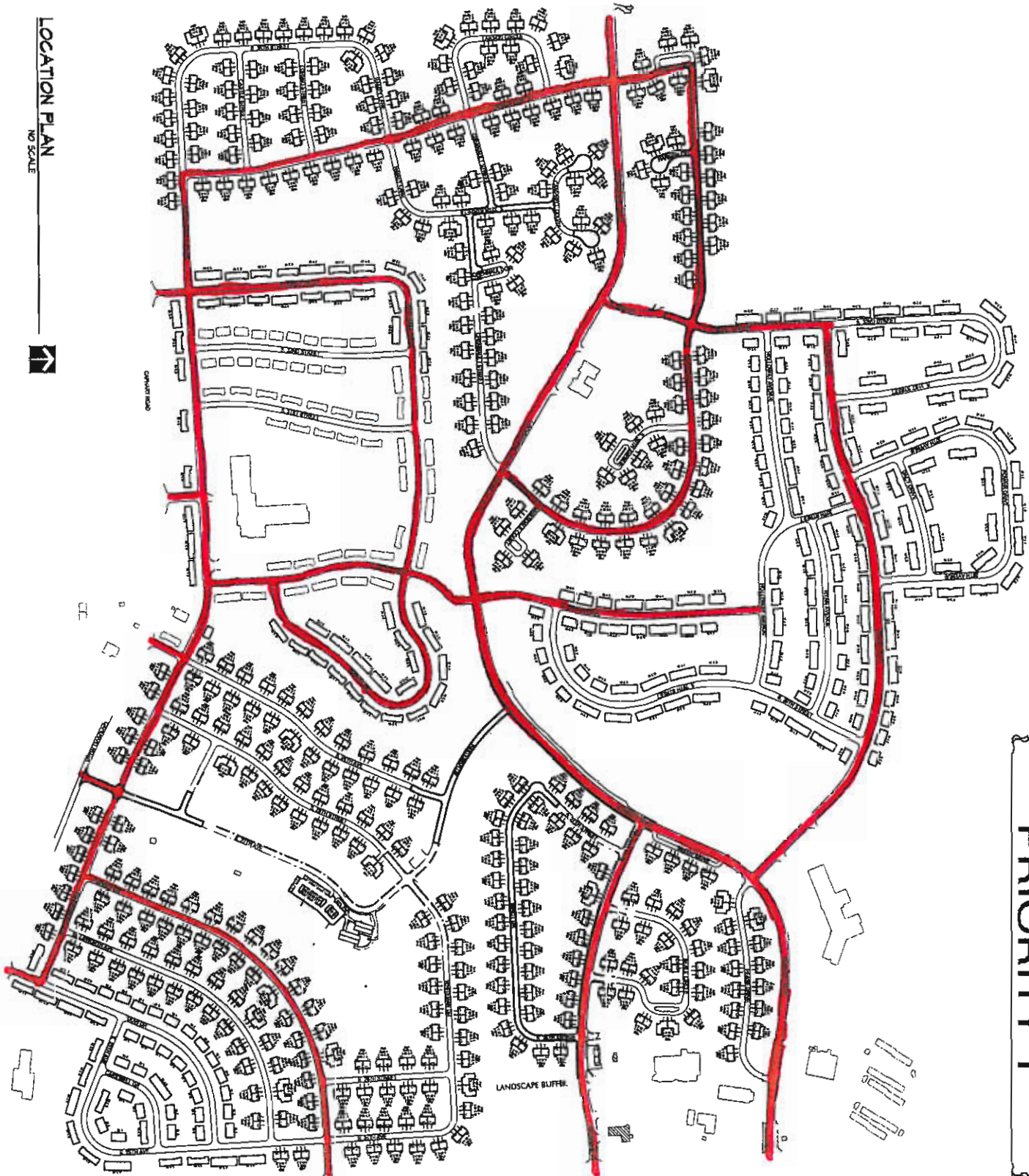
During the removal process, the snow crew will use an ice slicer to help break up any packed snow or ice on the streets. Their focus will be at intersections and intermittently between these intersections. If it is forecasted for temperatures to exceed 32 deg during the day the use of sand or salt will be determined based on severity of road conditions.

Furthermore, with warmer temperatures and the use of chemicals, the packed snow and ice will begin to break up and melt. At this point the crews will clean up roads based on the priority system stated above in order to reduce” slippery” roads the next morning.

This plan is subject to change based on construction and demolition.

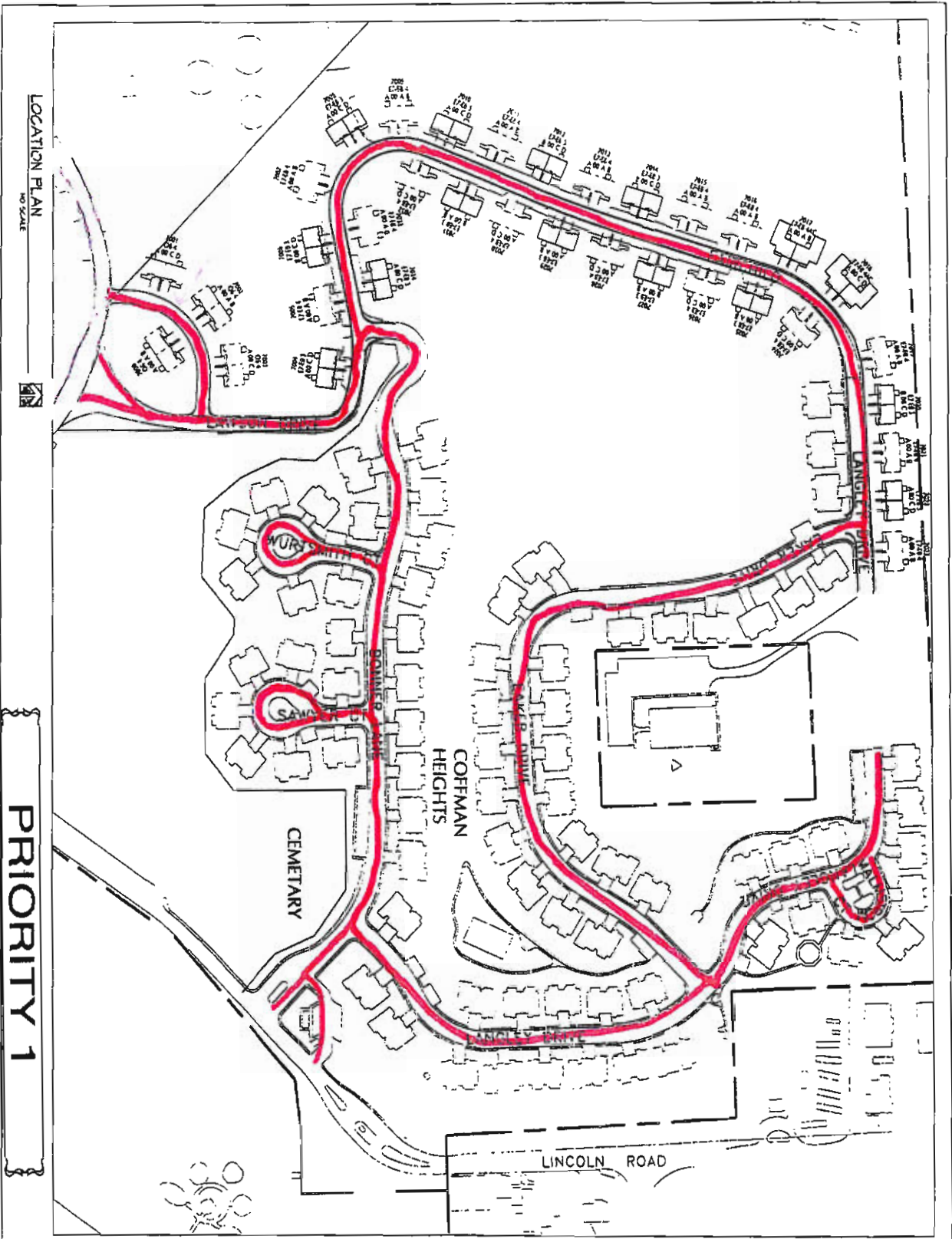
*Rising View Communities, Offutt
Snow Removal Plan
Revised August 18, 2009*

PRIORITY 1



LOCATION PLAN
NO SCALE





LOCATION PLAN
NO SCALE

PRIORITY 1

GENERAL NOTES

NO TOTAL UNITS	35 TOTAL SCHEDULES	NO. UNITS	NO. SCHEDULES
ET-2B 3/A	1	1	1
ET-2B 3/B	2	2	2
ET-2B 4/A	27	27	27
ET-2B 4/A	4	4	4
OT-2/A	7	7	7
TOTAL	45	45	45

**Offutt Housing
New Homes**
Offutt AFB
Bellevue, NE

O6 4 Bedroom
LOCATION PLAN
PARCEL A

H B A
HOLLAND BASHAM ARCHITECTS
78 SOUTH 90th AVENUE
OMAHA, NEBRASKA 68132
(402) 551-9900

PROJECT 05073

DATE

preliminary
not for construction

SHEET

PRIORITY 2



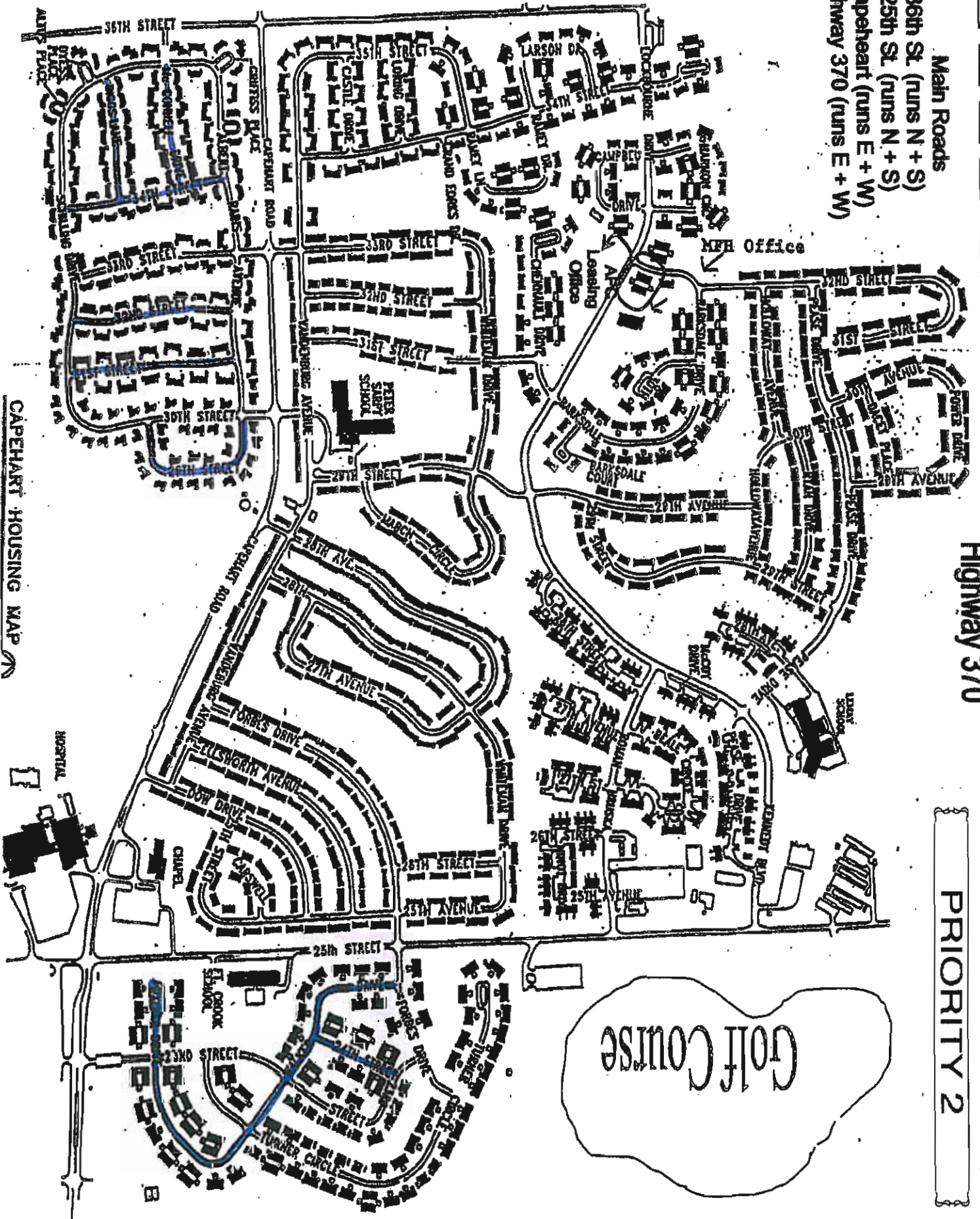
LOCATION PLAN
NO SCALE

Main Roads

- 36th St. (runs N + S)
- 25th St. (runs N + S)
- Capeheart (runs E + W)
- Highway 370 (runs E + W)

Highway 370

PRIORITY 2



CAPEHEART HOUSING MAP

PRIORITY 3



LOCATION PLAN
NO SCALE

